

# SPEC SHEET + MEASUREMENTS

**CornerStone**

CornerStone® Elements Insulated Parka. CSJ10

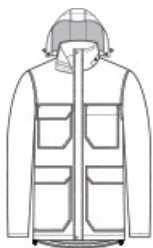
## Product photo



Insulated and fully seam-sealed, this weather-resistant parka is built to protect you from the elements so you can take on almost any tough work environment.

- 100% polyester woven 300-denier oxford shell with durable water-repellent (DWR) finish
- 5.2-ounce, 100% polyfill insulation diamond quilted body
- 3.5-ounce, 100% polyfill insulation diamond quilted hood and sleeves
- Fabric waterproof rating: 5000MM
- Fabric breathability rating: 5000G/M<sup>2</sup>
- Triple-needle stitching
- Rivet and snap details throughout
- Fully seam-sealed
- Adjustable, snap-removable hood
- Full-length exterior storm flap with snap closure
- Four front bellowed pockets with flaps and hook and loop closures, side entries
- Molded center front zippered closure
- Open cuffs with interior rib knit
- Adjustable drawcord hem
- Decoration access pocket

## Sketches



front



back

## CARE INSTRUCTIONS

Machine Wash Cold. Do Not Use Softener. Only Non-Chlorine Bleach When Needed. Tumble Dry Low. Cool Iron, If Necessary. Do Not Dry Clean.

# SPEC SHEET + MEASUREMENTS



## CornerStone® Elements Insulated Parka. CSJ10

### PRODUCT MEASUREMENTS

	XS	S	M	L	XL	2XL	3XL	4XL
Body Length at Back	33 1/2	34 1/2	35 1/2	36 1/2	37 1/2	38 1/2	39	39 1/2
Chest	21 1/4	22 3/4	24 1/4	25 3/4	27 1/4	28 3/4	30 3/4	32 3/4
Sleeve Length from Center Back	35 5/8	36 1/4	36 7/8	37 1/2	38 1/8	38 3/4	39 1/2	40 1/4
Chest Pocket Height	7 1/4	7 1/2	7 3/4	8	8 1/4	8 1/2	8 3/4	9
Chest Pocket Width	5 1/2	5 3/4	6	6 1/4	6 1/2	6 3/4	7	7 1/4

**Body Length at Back:** Measured from high point shoulder to finished hem at back.

**Chest:** Measured across the chest one inch below armhole when laid flat.

**Sleeve Length from Center Back:** Measure from Center Back neck to shoulder point to sleeve hem.

**Chest Pocket Height:** Measure from top to bottom at center.

# SPEC SHEET + MEASUREMENTS

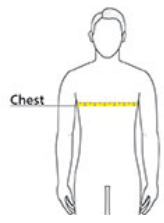


CornerStone® Elements Insulated Parka. CSJ10

## SIZE CHARTS

	XS	S	M	L	XL	2XL	3XL	4XL
Chest	32-34	35-37	38-40	41-43	44-46	47-49	50-53	54-57

## HOW TO MEASURE



### CHEST

Measure under the arm and around the fullest part of the chest with arms down, keeping tape horizontal.

## COLORS



Black  
PMS BLACK  
C



Iron Grey  
PMS 7540C



Navy  
PMS 532C